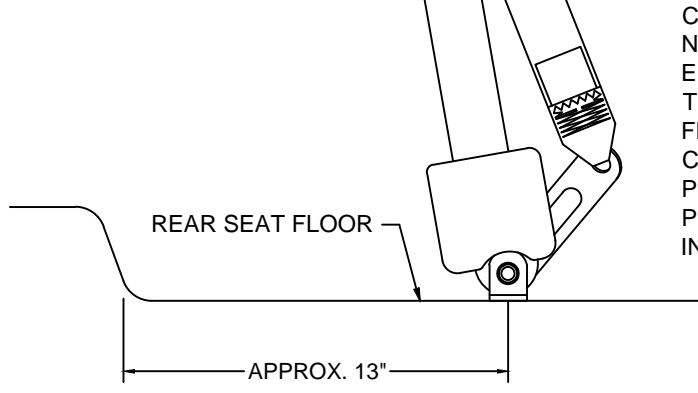
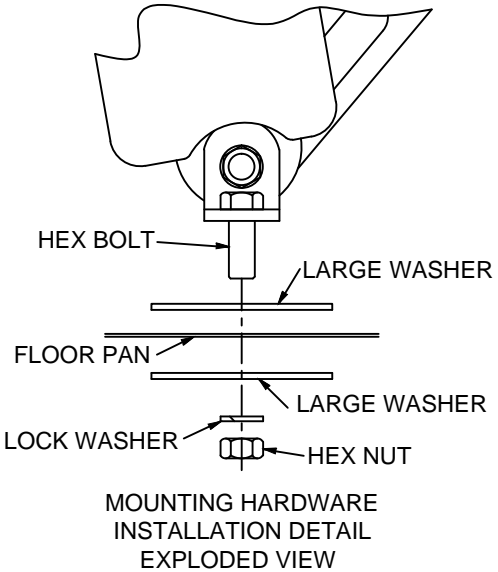
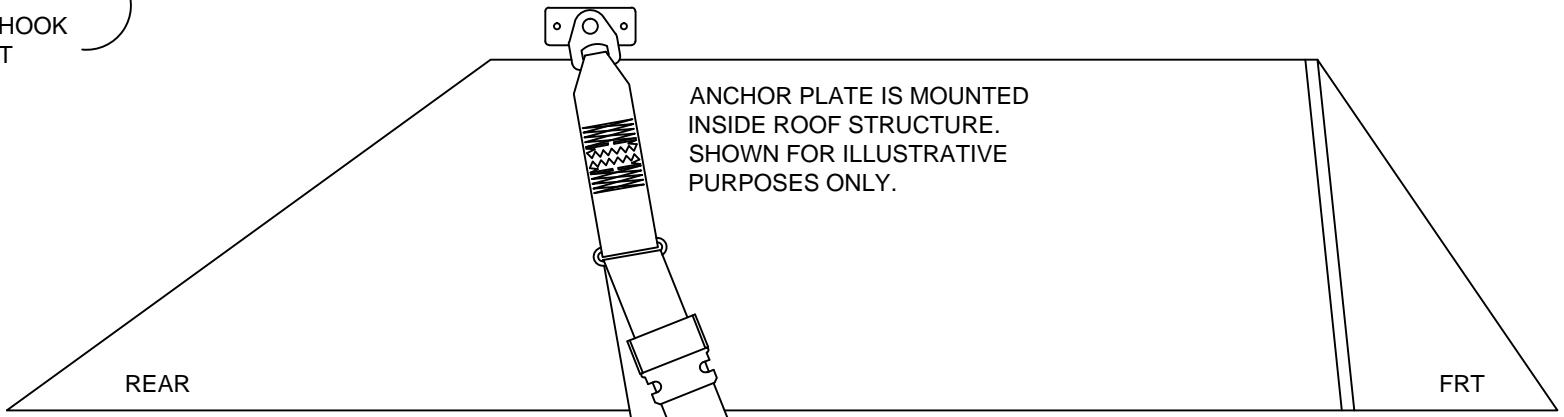


1. DRILL 1/2" HOLE CENTERED IN SMALL HOLE FROM COAT HOOK, POSITION ADAPTER PLATE OVER HOLE AND MARK SMALL HOLES TO DRILL FOR POP RIVETS.
2. DRILL POP RIVET HOLES USING  $\frac{5}{32}$ " DRILL BIT.
3. CUT SLOT IN ROOF STRUCTURE LARGE ENOUGH TO ENABLE ADAPTER PLATE TO DROP INTO PLACE.
4. LOOP A SMALL STRING THROUGH ONE OF THE RIVET HOLES BEFORE YOU DROP PLATE INTO SLOT. POSITION THE PLATE INSIDE STRUCTURE TO ALIGN RIVET HOLES. (USING ANCHOR BOLT MAY HELP TO POSITION PLATE.)
5. RIVETS CAN NOW BE INSTALLED TO SECURE ADAPTER PLATE IN PLACE.



CAUTION: WHEN DRILLING FLOOR, MAKE SURE NOT TO DRILL INTO FUEL LINES, BRAKE LINES, ELECTRICAL WIRES OR ANY THING OTHER THAN THE FLOOR SHEETMETAL. ENSURE FLOOR METAL IS NOT COMPROMISED DUE TO CORROSION OR OTHER ISSUES. POSITION RETRACTOR AS CLOSE TO SILL PLATE AS POSSIBLE WITHOUT CAUSING INTERFERENCE PROBLEMS.